

# Motor replacement guide

LR-2680A

## 1. Prep

- 1.1. Turn power switch to OFF.
- 1.2. Unplug from wall outlet.

## 2. Remove old motor

- 2.1. Remove the 4 screws securing the motor cover.



- 2.2. Remove the plastic cover and plastic ring cover.
- 2.3. Pry out the old motor and disconnect the 3 wires.

### 3. Install new motor

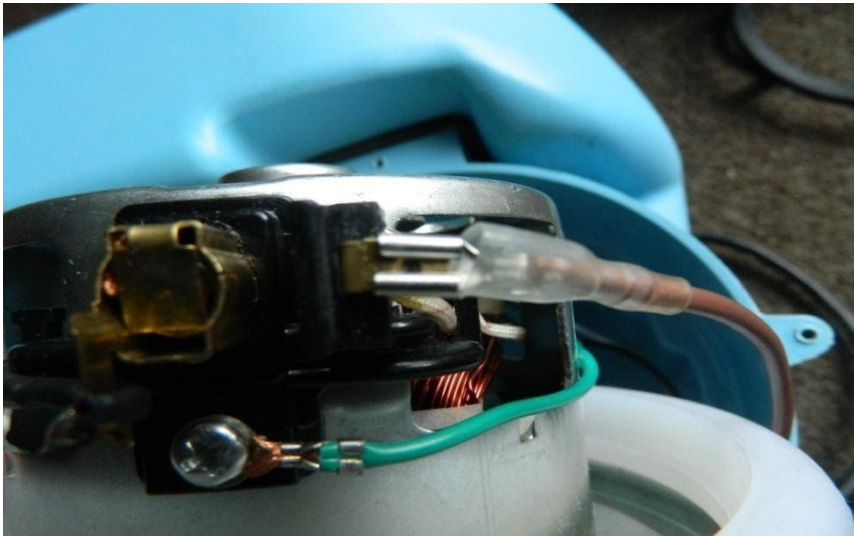
- 3.1. Turn the new motor upside down, then locate the copper connector shown below and bend it 90 degrees as shown:



- 3.2. Use pliers to straighten the connector clip:



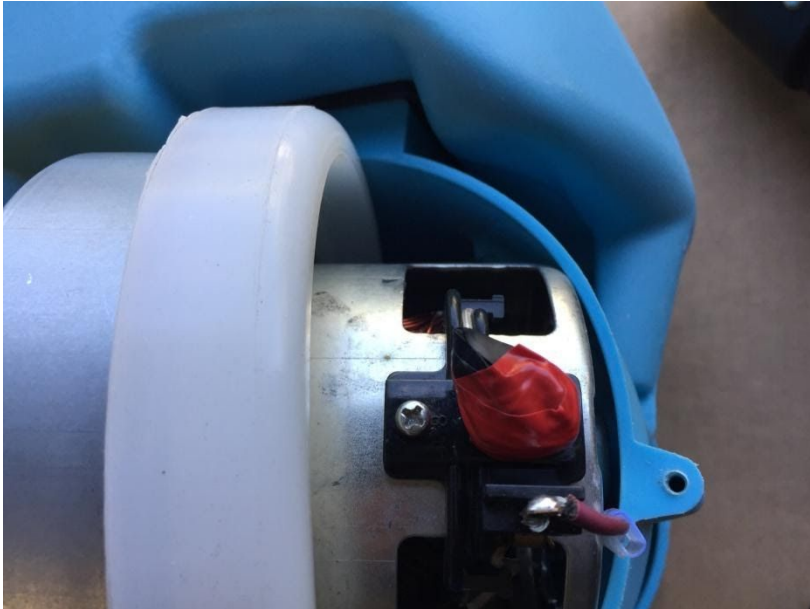
3.3. Plug the wires into the new motor. The ground wire must be screwed in. The other two wires are plugged in.



3.4. When inserting the motor, **ORIENT THE MOTOR SO THE COPPER CONNECTOR AND THE SWITCH ARE AT LEAST 1 INCH APART.**



3.5. We recommend wrapping the copper connector with electrical tape:



3.6. Screw the motor cover ring and motor cover back on.

**You're done!**